

COVID-19 Response on Navajo Nation: A Partnership Perspective from COPE & IHS

HANNAH SEHN, DR. JENNIE WEI, DR. MIA LOZADA, AND DR. SONYA SHIN

PARTNERS IN HEALTH COVID-19 WEBINAR SERIES

JULY 15, 2020 | 3:00 PM EDT





COPE
Community Outreach &
Patient Empowerment



Partners
In Health

Navajo Nation's Strong COVID-19 Response



COPE partners to provide COVID-19 support

- Medical Supplies (including PPE to local partners)
- Community Support (including food, cleaning supplies, masks, gloves, toiletries, etc.)
- Support to Stores (PPE, cleaning supplies, educational materials, etc.)
- Support and outreach for unsheltered Individuals
- Travel support for volunteer medical personnel staffing Navajo Nation health facilities
- Contact Tracing/Case Management
- Educational materials (videos, flyers, posters)
- Technical support

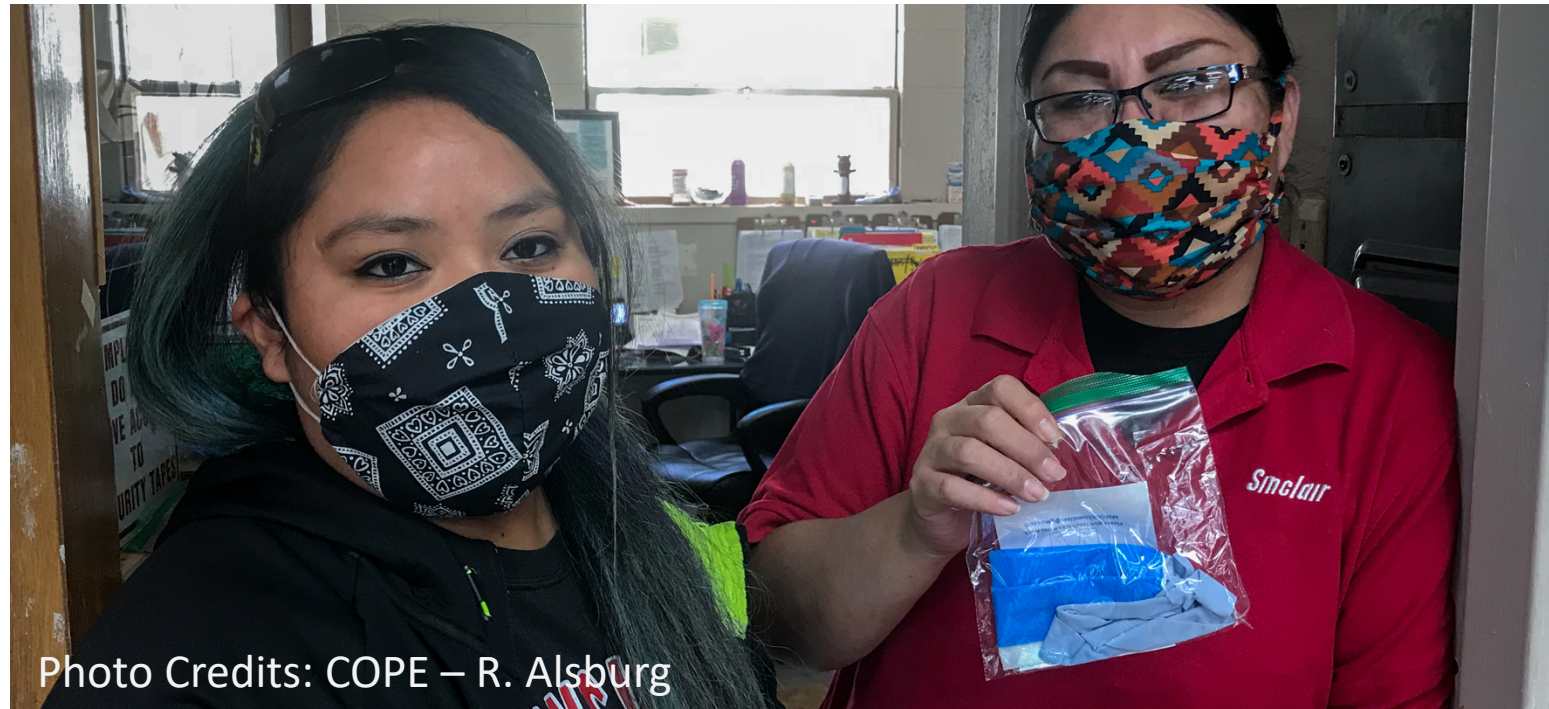


Photo Credits: COPE – R. Alsbury

Navajo Nation COVID-19 Case Management Strategy



Expanded Testing
Contact Tracing
Home Support
Safe Isolation



“We can outlive this virus. But we have to look at each step to be more creative.” Loucinda Charleston, CHR



Contact Tracing on Navajo Nation



Jim Thompson/Albuquerque Journal

Partnership highlights

- Coordinate effort under HCOC
- Outreach to sites to learn and listen

Contact Tracing strategies

- SOPs and Guides
- Workforce Projections
- Tailored CommCare App
- Volunteer Contact Tracers

Volunteer Contact Tracers



Contact Tracing Volunteer program

- Diné and regional public health students
- Training
 - Online: ASTHO / IHS HIPAA
 - Webinars: Navajo context, 1:1 role play
 - Weekly refreshers: layer additional skills
- Register in ESAR-VHP portal

Field support

- CommCare allows team communication
- Case Management huddles
- Team / 1:1 check-ins

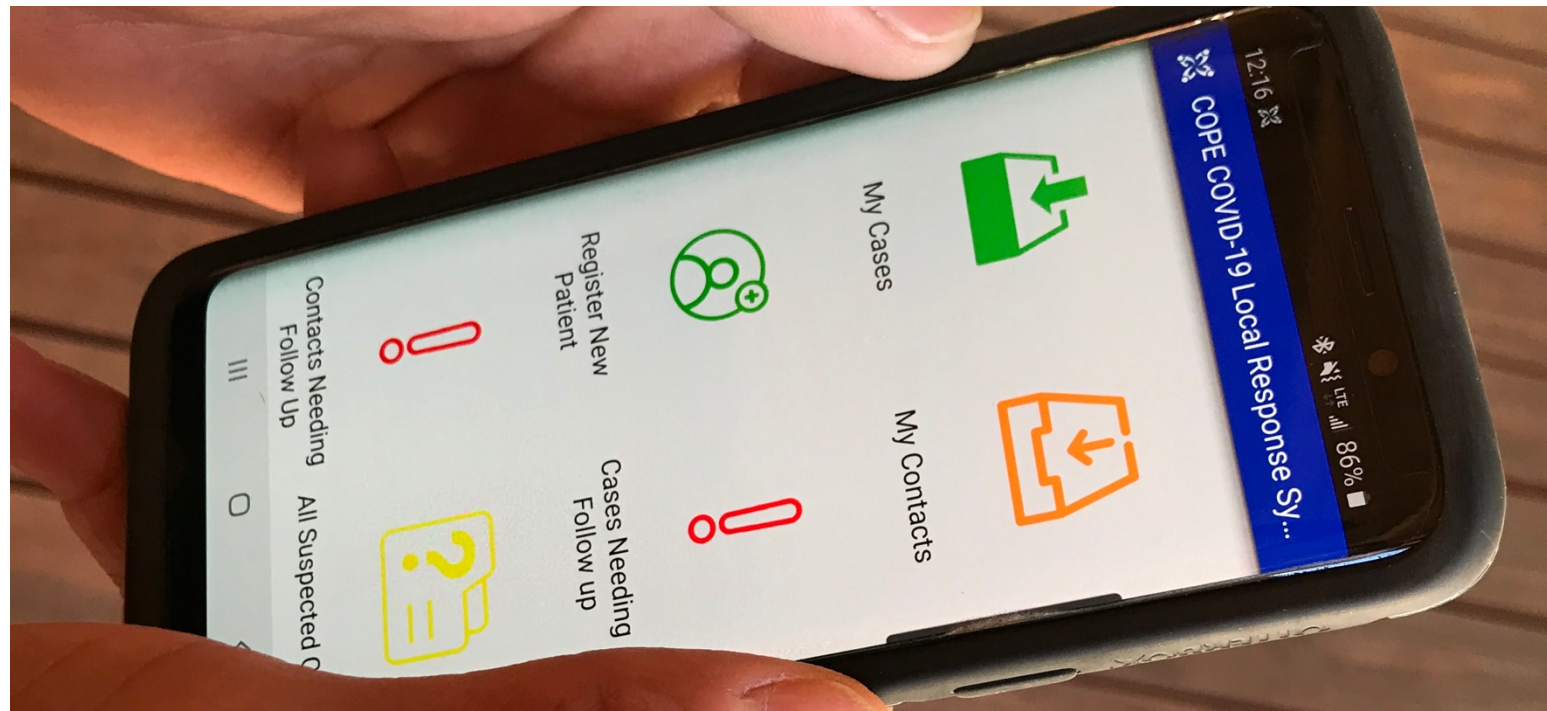
Future goals

- Certification / academic credit / work study
- More certified Navajo callers

CommCare COVID-19 System

CommCare System

- Navajo Epidemiology Center as the repository for all data
- Opportunity for better site access and visualization of their own data
- Referrals across sites
- Can work online and offline
- Open-source, HIPAA secure
- Ongoing updates for Navajo Nation
 - Add Navajo-specific questions
 - Ensure I/Q Follow-up in the community
 - Reporting functions
- Allows virtual callers to support team





hannah@copeprogram.org



sonya@copeprogram.org

Acknowledgements and Disclaimers

Disclosures:

Dr. Shin serves as HCOC Contact Tracing Lead for Navajo Nation, the Director of Research for COPE, and is an IHS employee at Gallup Indian Medical Center.

Hannah Sehn serves as the HCOC Commcare Transition Co-Lead for Navajo Nation and the interim Executive Director for COPE.

Ahéhee'

*To all of our partners, without whom
none of this work would be possible!*

Indian Health Service
Gallup Indian Medical Center
COVID-19 and Health Disparities Among Persons
Experiencing Homelessness

Jennie Wei, MD, MPH
Mia Lozada, MD

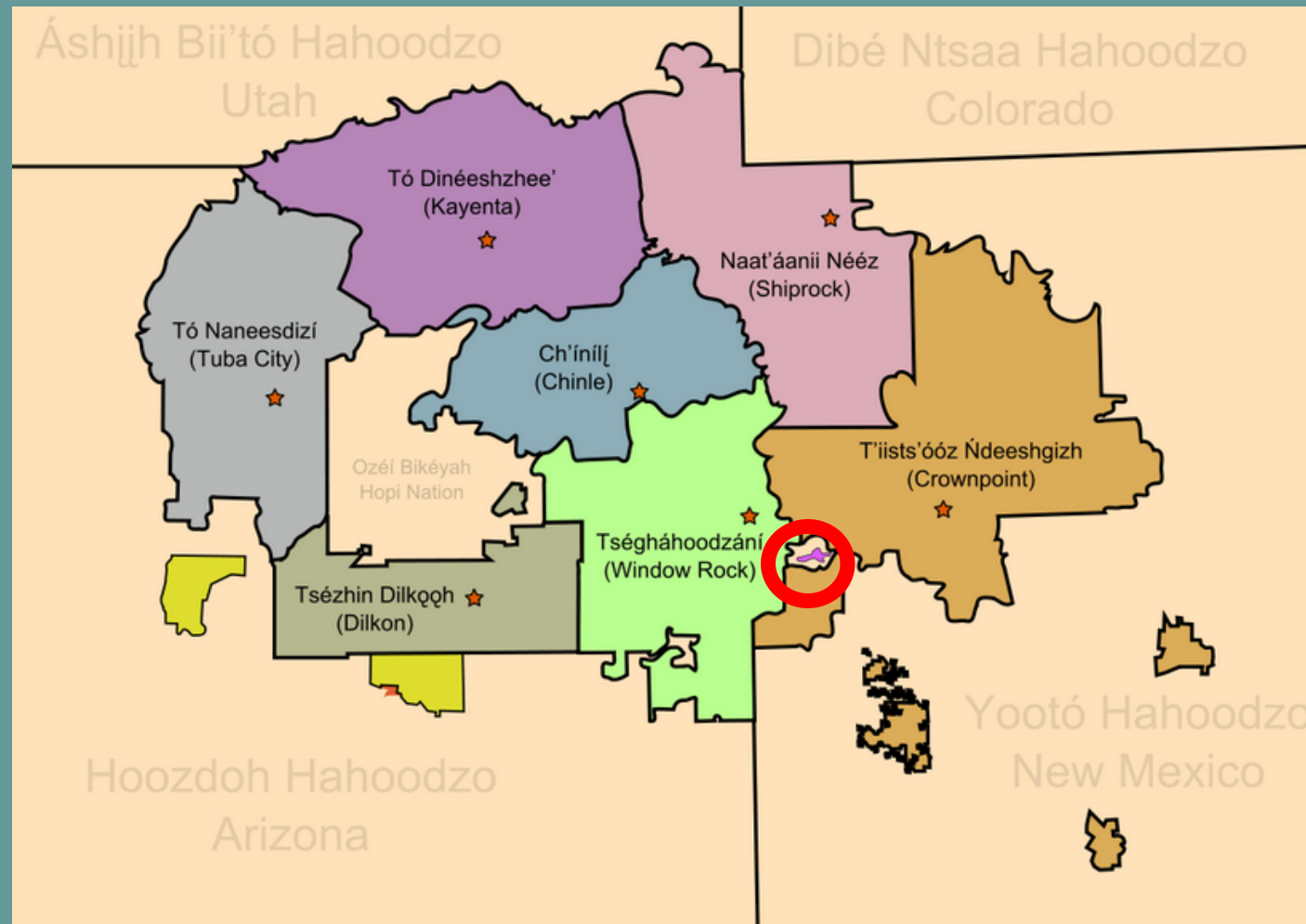
July 15, 2020



Objectives

- Illustrate the unique characteristics of Gallup, NM's social and medical environment
- Demonstrate a novel way to care for unsheltered persons with a history of substance use disorder
- Show how longstanding multiagency collaboration facilitated efficient and innovative COVID-19 response in a rural Indian Health Service location

Gallup, NM



Gallup Indian Medical Center





Photo by Paul Charlton



Photo by Paul Charlton



Photo by Paul Charlton



Photo by Paul Charlton

Gallup + COVID-19?

June 15,
2020

New deaths, last two weeks

	METRO OR MICRO AREA	GROWTH IN DEATHS	RECENT DEATHS	PER 1,000
1	Gallup, N.M.	FLAT OR DECREASING	35	0.48
2	Show Low, Ariz.	FLAT OR DECREASING	26	0.24
3	Vineland-Bridgeton, N.J.	FLAT OR DECREASING	34	0.23
4	Kokomo, Ind.	FLAT OR DECREASING	18	0.22
5	Farmington, N.M.	FLAT OR DECREASING	26	0.21
6	Milledgeville, Ga.	FLAT OR DECREASING	11	0.21
7	LaGrange, Ga.	STILL GROWING	12	0.17
8	Meridian, Miss.	FLAT OR DECREASING	17	0.17
9	Yuma, Ariz.	STILL GROWING	34	0.16
10	Manchester-Nashua, N.H.	FLATTENING	66	0.16
55	New York City area	FLAT OR DECREASING	1,336	0.07



Limited to areas with at least 50,000 people. Recent cases and deaths are those announced in the last two weeks, but in some cases may have taken place earlier because of delays in reporting. "Flattening" means that the number of new cases is still increasing, but the rate of growth is slowing.

June 26,
2020

nytimes.com

Gallup, N.M.

x

4. The Places Hit Hardest

Below, the metro areas that have had the highest cumulative case and death rates since the start of the outbreak:

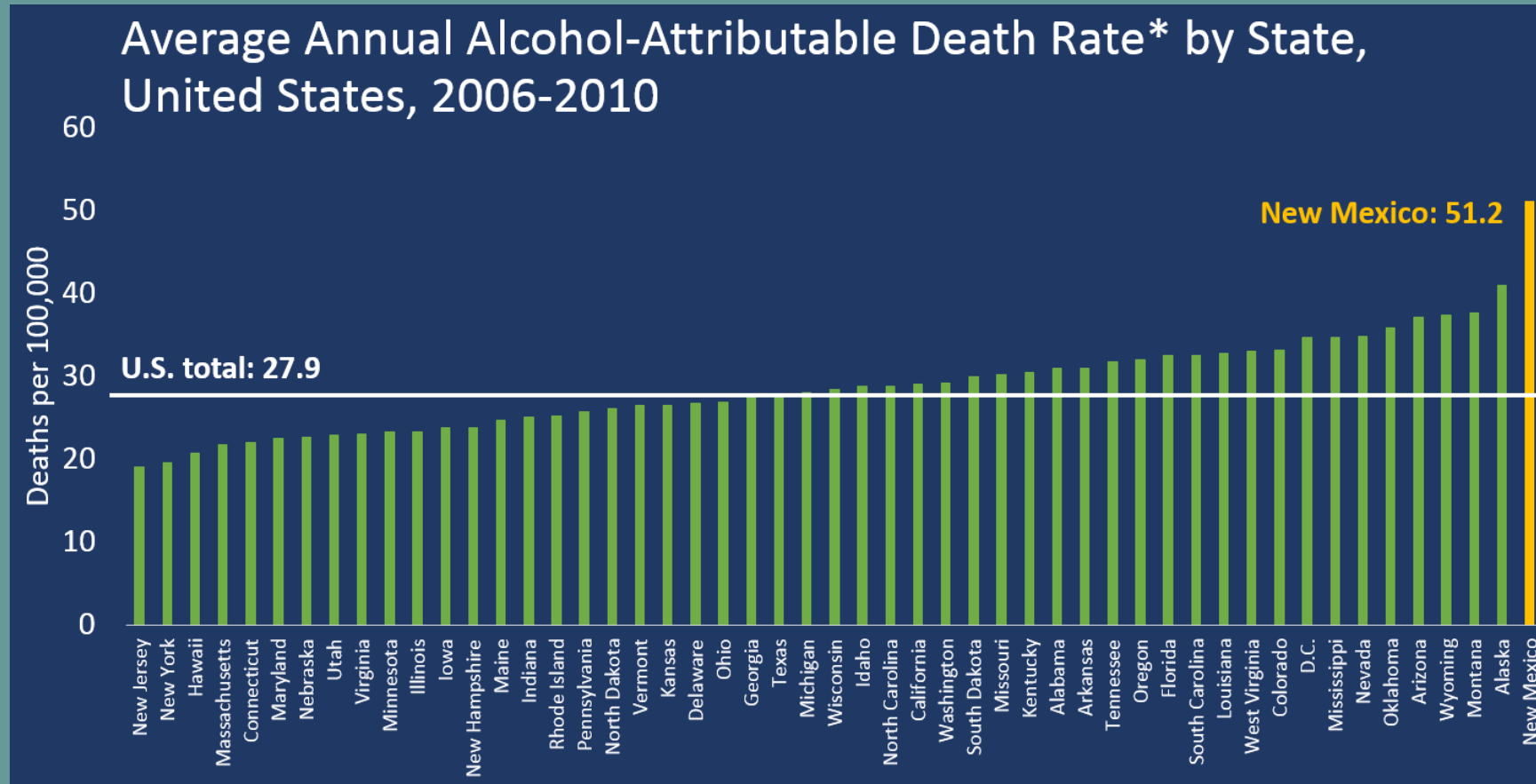
Cumulative confirmed cases

	METRO OR MICRO AREA	POPULATION	CASES	PER 1,000
1	Gallup, N.M.	72,290	3,179	43.98
2	Marion, Ohio	65,256	2,714	41.59
3	Sioux City, Iowa	169,045	5,269	31.17
4	El Centro, Calif.	181,827	5,549	30.52
5	Show Low, Ariz.	110,445	3,248	29.41
6	Yakima, Wash.	251,446	6,736	26.79
7	New York City area	20.0 mil.	504,066	25.23
8	Yuma, Ariz.	212,128	5,131	24.19
9	Huntsville, Texas	87,220	1,976	22.66
10	Trenton-Princeton, N.J.	369,811	7,572	20.48



Alcohol-Related Death Rates in the US

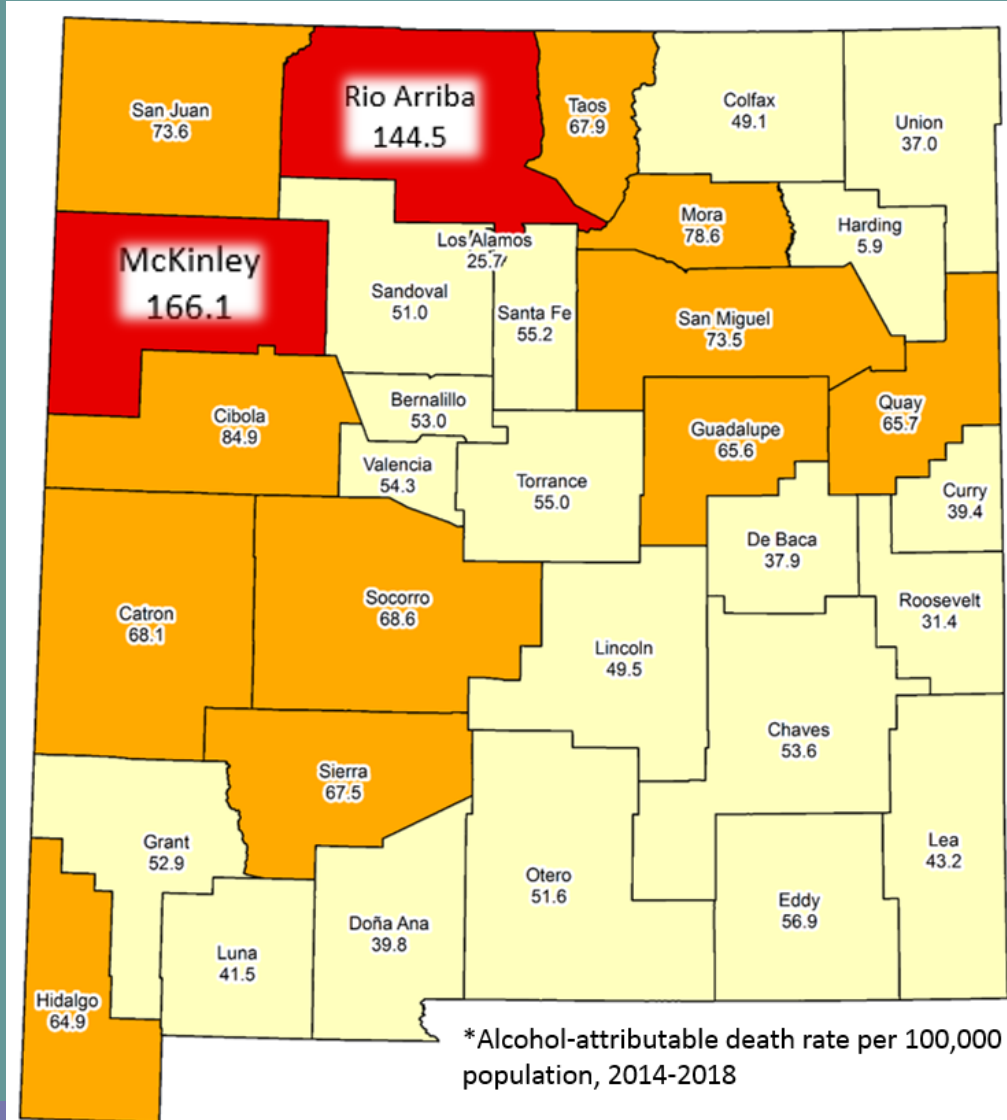
- New Mexico has had the highest alcohol-related death rate of any state in the US since 1997



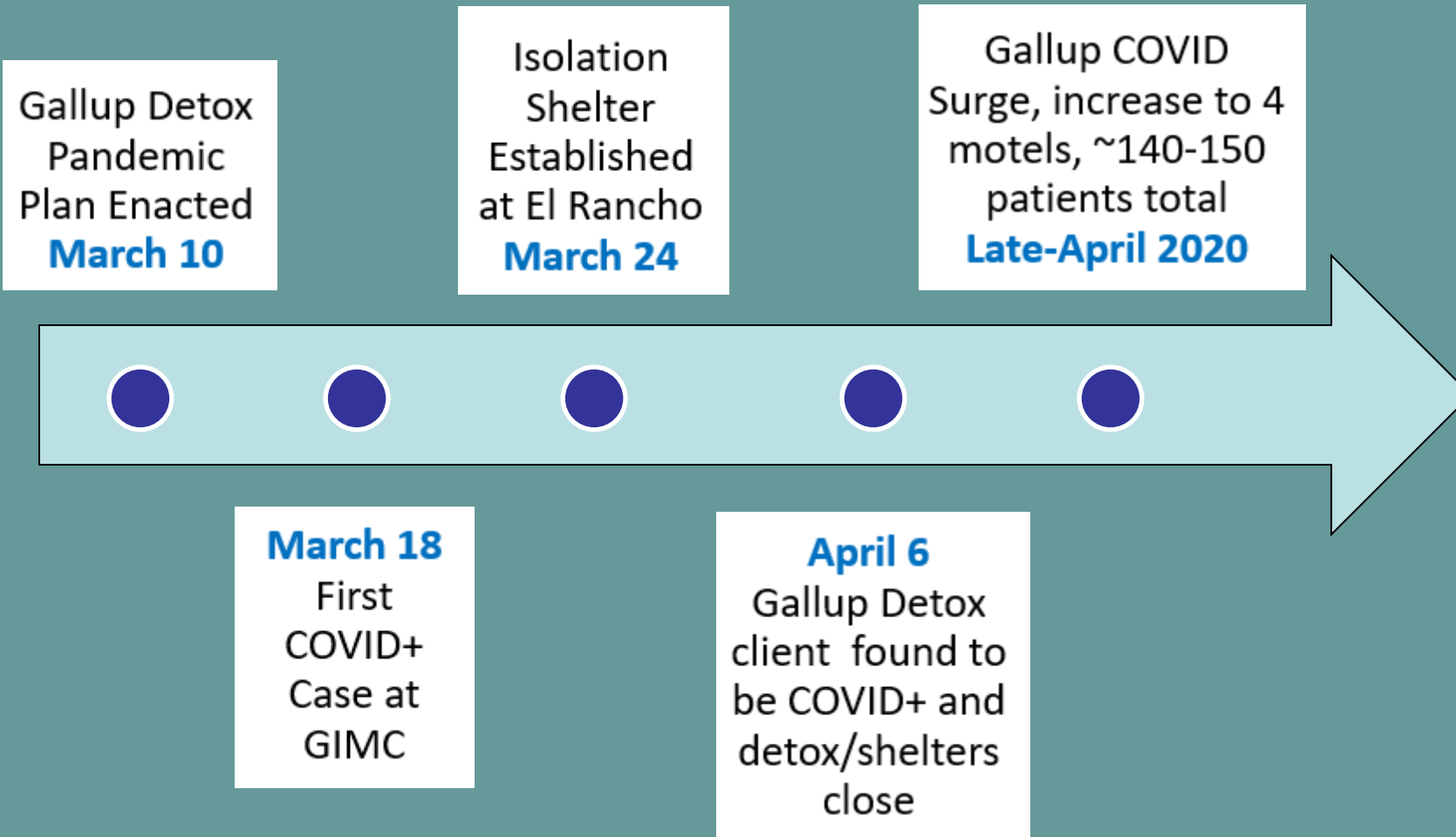
NM and McKinley County Alcohol-Related Death Rates

- McKinley County (where GSU is located) has had the highest death rates among all counties in NM (2014-2018)
- American Indians/Alaska Natives bore the highest burden of alcohol-related deaths with a death rate of 170/100,000 people (2014-2018)

<https://nmhealth.org/news/information/2019/9/?view=799>

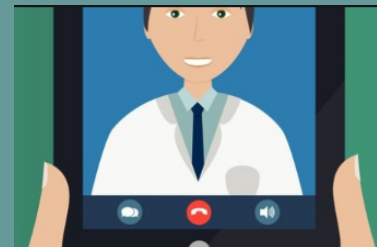


What happened in Gallup, NM?



Gallup Isolation/Quarantine Hotel Program

1. Lodging and meals
2. 24/7 transport drivers
3. Collaboration with staff/volunteers (COPE) to be on call 24/7 for any needs
4. Medical oversight teams: MD/RN/PHN/CHRs/etc
5. Certified Peer Support Workers (CPSW)
6. Chaplain, Navajo Interpreter, Native Medicine
7. iPad program for telemedicine, AA/NA meetings, group education sessions



Housing First



Photo credit: Mia Lozada



Photo credit: Mia Lozada



My name is [unclear]
writting to you. Not just for my
SELF for others Also. Thanking
you and your First responders
They are doing A great job
checking our Temp And any
other medical Conditions we
have. I've been put in this
motel A room by myself at
first I thought it was okay and
then I wanted to leave cause
I have And A addiction problem
and some of your first responders
have helped me by talking to
me setting me up with a
Treatment Center or I should
say A healing center - get rid
of my Addiction I'm healing
from this poison and other poisons
I Just would like To say
thank you & your Respon.

Thank you for all the partnerships and collaboration!

- IHS (Navajo Area, GIMC/GSU Internal Medicine, Family Medicine, Emergency Department, Behavioral Health Services, Public Health Nurses, Pharmacy, Case Management, Social Workers, countless volunteers!)
- Community Outreach Patient Empowerment (COPE)
- Navajo Nation, Community Health Representatives
- Rehoboth McKinley Christian Hospital
- NCI Detox
- Volunteers (UCSF, HEAL Global Health Fellowship, COVID Care Force, NM Medical Reserve Corps)
- City of Gallup Mayor
- McKinley County Office of Emergency Management
- NM Governor's Office
- NM DOH
- NM Health Secretary
- NM National Guard
- Certified Peer Support Workers

Resources/Work Cited

- US Department of Housing and Urban Development. 2017 annual homeless assessment report to Congress. Part 1: point-in-time estimates of homelessness. Washington, DC: US Department of Housing and Urban Development; 2017. <https://www.hudexchange.info/resource/5639/2017-ahar-part-1-pit-estimates-of-homelessness-in-the-us>
- Mosites et al. Assessment of SARS-CoV-2 Infection Prevalence in Homeless Shelters — Four U.S. Cities, March 27–April 15, 2020. Center for Disease Control and Prevention, MMWR , April 2020.
- U.S. Department of Health and Human Services Centers for Disease Control and Prevention Order for Quarantine, Section 361 of the Public Health Service Act 42 Code of Federal Regulations Part 70 (Interstate) and Part 71 (Foreign)
- Center for Disease Control Coronavirus Disease 2019 Resources to support people experiencing homelessness
- Social Distancing and Isolation Protocols, San Francisco Department of Public Health
- Parmet, Wendy et al. Covid-19 – The Law and Limits of Quarantine. N Engl J Med 2020; 382: e28. April 2020.
- 45 CFR § 164.512 - Uses and disclosures for which an authorization or opportunity to agree or object is not required.
- Stahre M, et al. Contribution of excessive alcohol consumption to deaths and years of potential life lost in the United States. Prev Chronic Dis. June 2014.
- Department of Health Reports Rise in Alcohol-Related Deaths in 2018. Substance Abuse Epidemiology, September 2019

Thank you!

jennie.wei@ihs.gov
mia.lozada@ihs.gov

Q&A with Leslie Friday

