

PIH US COVID-19 Learning Collaborative

**Care Coordination and Social Support: Strengthening
Responses in Communities Hardest Hit by COVID-19**

Learning Series Kickoff Webinar
19 October 2020



Agenda

12:00-12:05	Welcome, introductions, objectives
12:05-12:30	Plenary presentation: Dr. Joia Mukherjee
12:30-1:00	Panel Discussion, moderated by Joia Mukherjee <ul style="list-style-type: none">• Oscar Baez• Rexine Williams• Fionnuala Seiferth• Justin Mendoza• Cate Oswald
1:00-1:15	Q&A
1:15-1:30	Closing Announcements + Feedback Survey

Welcome to our Learning Series Kickoff Webinar!

- Launch of topical, action-oriented miniseries
- Kickoff webinar, 3 workshops for selected implementers
- Opportunity for late applications; information shared end of session

Hosted by PIH Learning Collaborative, United States Public Health Accompaniment Unit (USPHAU), supporting pandemic response across the US

Session Objectives

- To outline the longstanding social and structural determinants that predispose the same communities to poor health outcomes, as well as infection with COVID-19 and poorer prognosis
- To illustrate how linkage with resources and social supports in the context of isolation and quarantine can help to promote equity in COVID-19 response
- To showcase implementers who have established effective and equitable structures for resource coordination and social support for safe isolation and quarantine
- To reflect upon the ongoing challenges community members face in adhering to recommendations for isolation and quarantine, and the challenges that public health implementers face in meeting communities' needs
- To share next steps for Learning Series members and the Learning Collaborative Community

Organizations in attendance:

- ASTHO
- Baltimore Corps
- Catholic Charity Maine
- CDC Foundation
- CORE Response
- Department of Community Health, Walla Walla County
- DOHMH
- Erie Family Health Centers
- Florida Institute for Health Innovation
- Franklin County Public Health
- Harris County Public Health
- Inner City Muslim Action Network
- Lutheran Social Services NCA
- Maryland Department of Health
- NC DHHS
- NYC Department of Health
- Ohio Department of Health
- Ohio National Guard
- Palm Beach County
- PIMA county Dept of Health
- Preserve Rural Orange
- Resolve to Save Lives
- Save Children
- Service Year Alliance
- TCPH
- Tracing Health
- U Chicago Medicine

Opening Plenary:

The Political Economy of Health and COVID-19



Joia Mukherjee, MD, MPH

Chief Medical Officer, Partners In Health

Associate Professor of Medicine, Division of Global Health Equity, Department of Medicine, Brigham and Women's Hospital

Associate Professor of Global Health and Social Medicine, Harvard Medical School

Director, Master of Medical Sciences in Global Health Delivery, Harvard Medical School

Director, Program in Global Medical Education and Social Change, Harvard Medical School

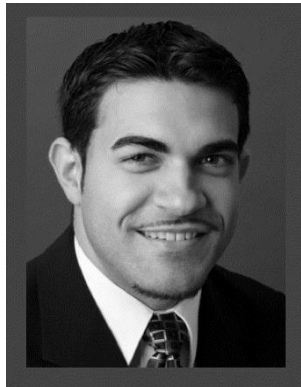
Dr. Mukherjee's scholarly work focuses on the provision of health as a human right and on the design, implementation, and evaluation of comprehensive health care in resource-poor settings.

Panel Discussion:

Care Resource Coordination and Social Supports for Communities Hardest Hit by COVID-19



Cate Oswald
*Chief Policy and
Partnerships Officer*
Partners In Health



Oscar Baez, MPP
*Senior Community
Engagement Advisor*
Resolve to Save Lives



Rexine Williams
*Contact Tracing
Supervisor*
COPE, Navajo Nation



Fionnuala Seiferth
*Senior Project Manager, Take
Care*
NYC Test & Trace Corps



Justin Mendoza
*Advocacy Manager, US
Health Policy*
Partners In Health

COVID-19, Health Equity and the Next Pandemic

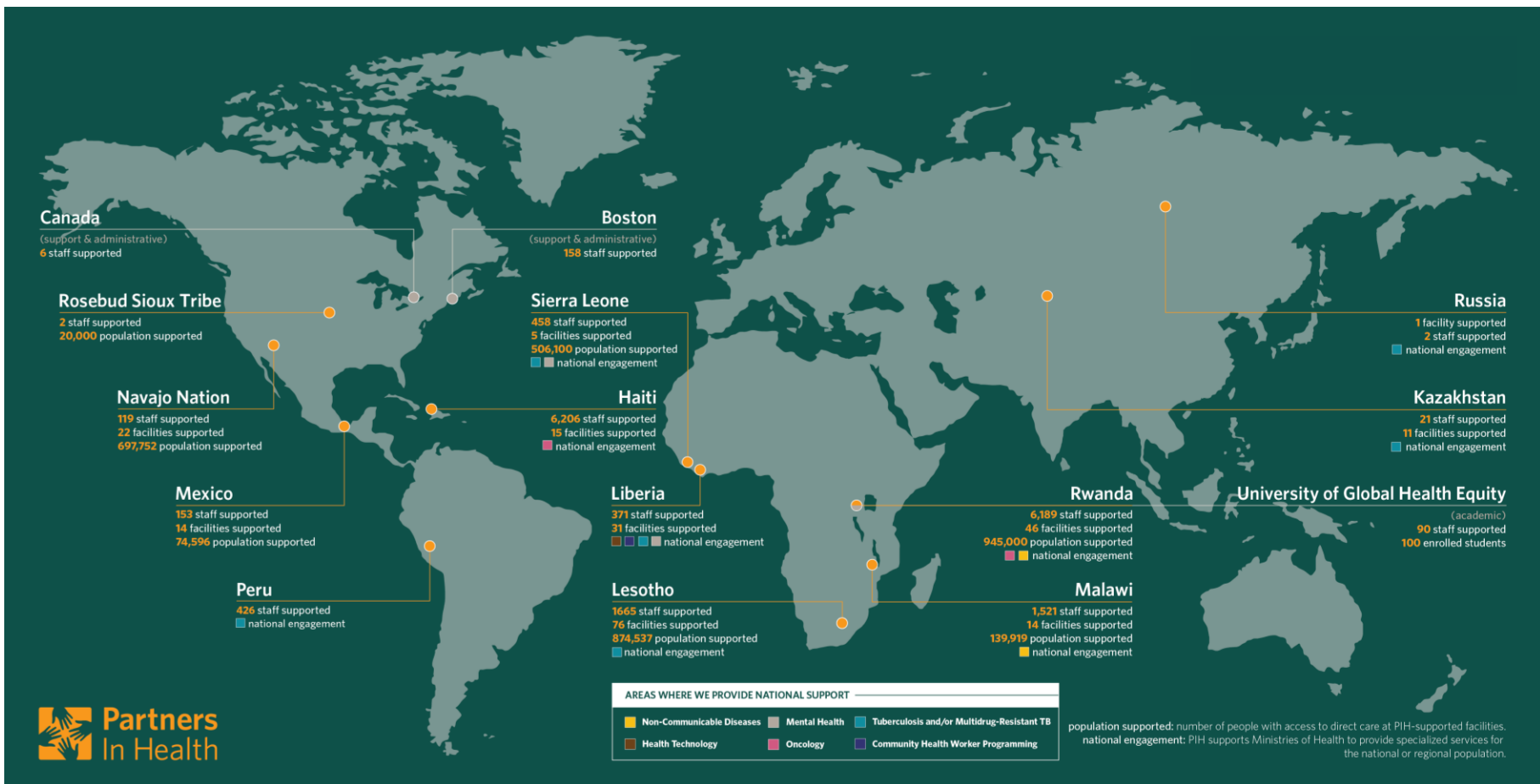
Joia S. Mukherjee, MD, MPH

Associate Professor of Medicine

Division of Global Health Equity, Brigham and Women's
Hospital

Department of Global Health and Social Medicine





On Pandemic Preparedness

- “Pandemic preparedness” is rooted in a set of concepts:
 - prevention, detection, rapid response, health system, regulations, risk
- Nature of conditions:
 - states of preparedness
 - what constitutes preparedness
 - what ought and ought not be funded
- Validity: what is known about pandemic preparedness has been codified, written about, taught.

Global Health Security Index 2017-2020

- Developed by the Nuclear Threat Institute (NTI), Johns Hopkins University (JHU) and the Economist Intelligence Unity (EIU)
- Input of factors from WHO, financial analysis, health system status.



PREVENTION

Prevention of the emergence or release of pathogens



DETECTION AND REPORTING

Early detection and reporting for epidemics of potential international concern



RAPID RESPONSE

Rapid response to and mitigation of the spread of an epidemic



HEALTH SYSTEM

Robust health system to treat the sick and protect health workers



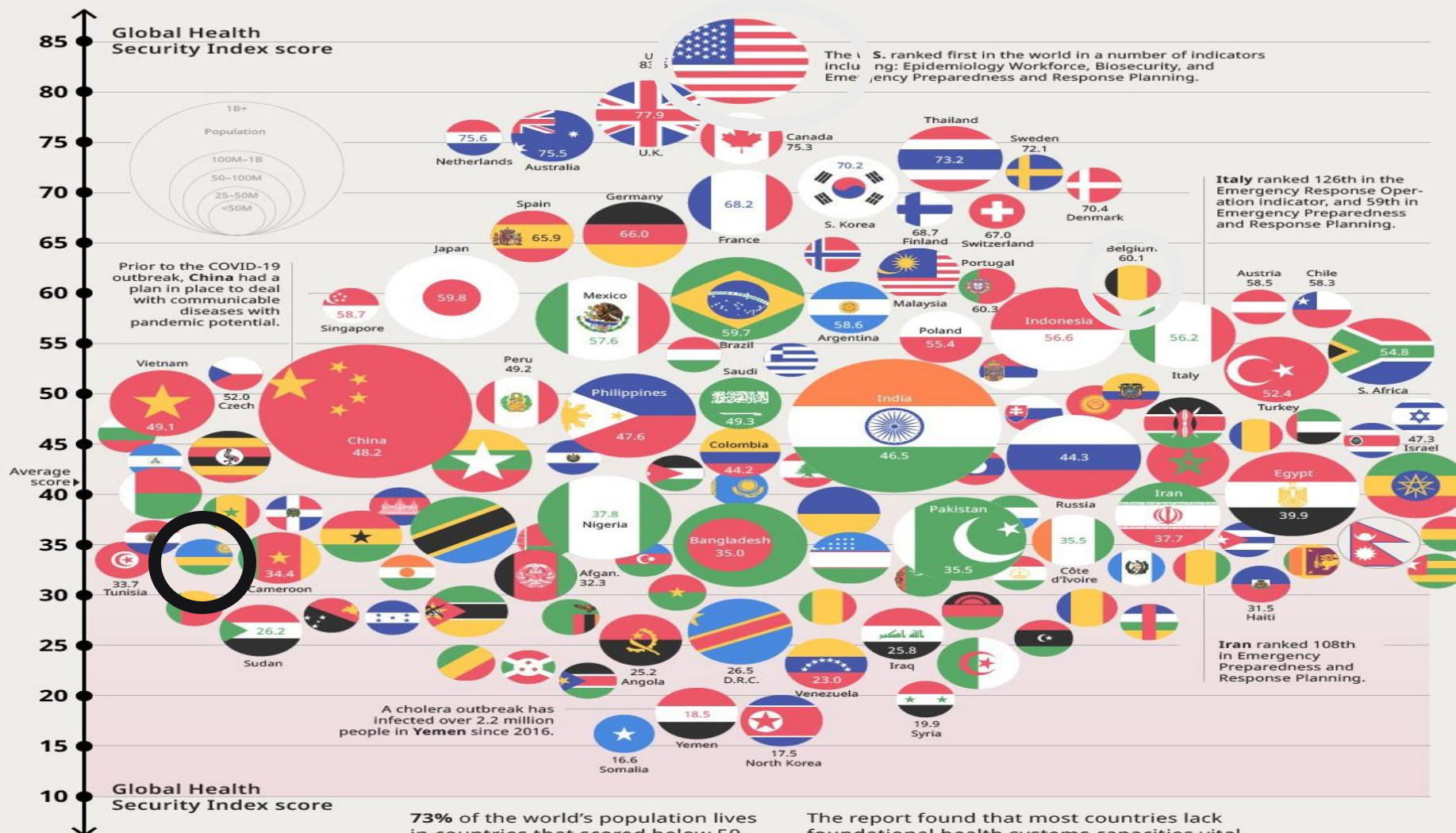
COMPLIANCE WITH GLOBAL NORMS

Commitments to improving national capacity, financing plans, and adhering to global norms



RISK ENVIRONMENT

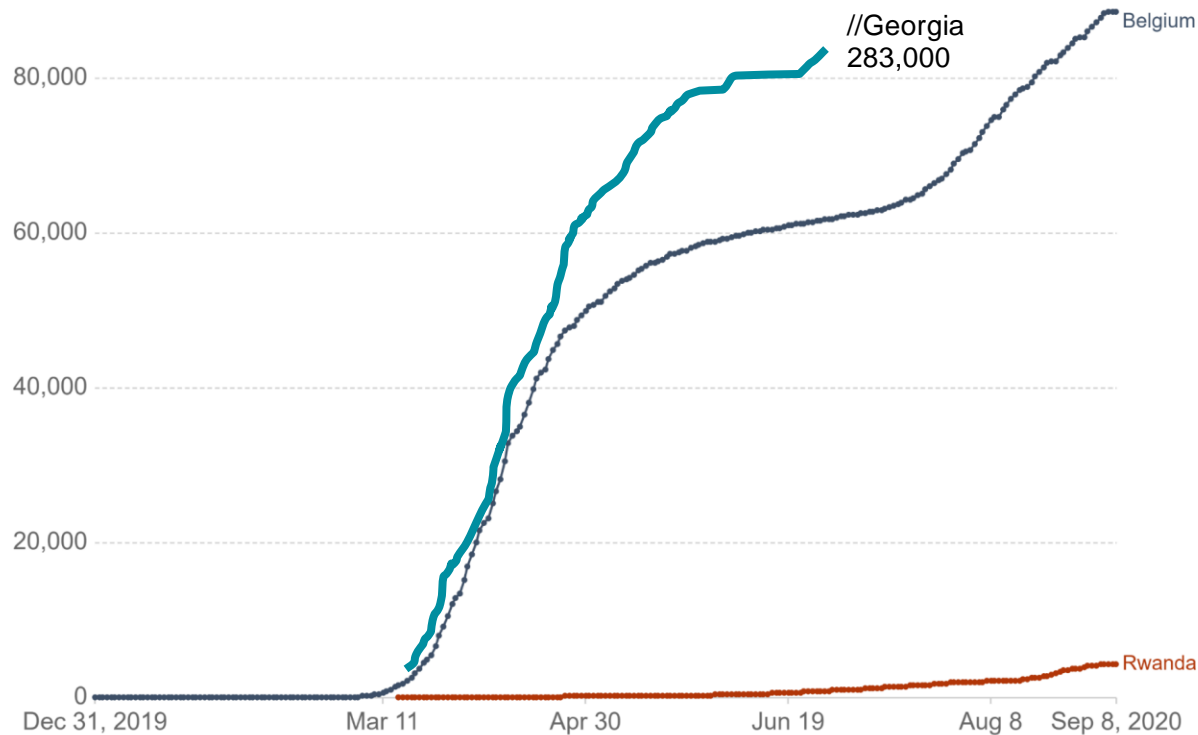
Overall risk environment and country vulnerability to biological threats



Cumulative confirmed COVID-19 cases

The number of confirmed cases is lower than the number of actual cases; the main reason for that is limited testing.

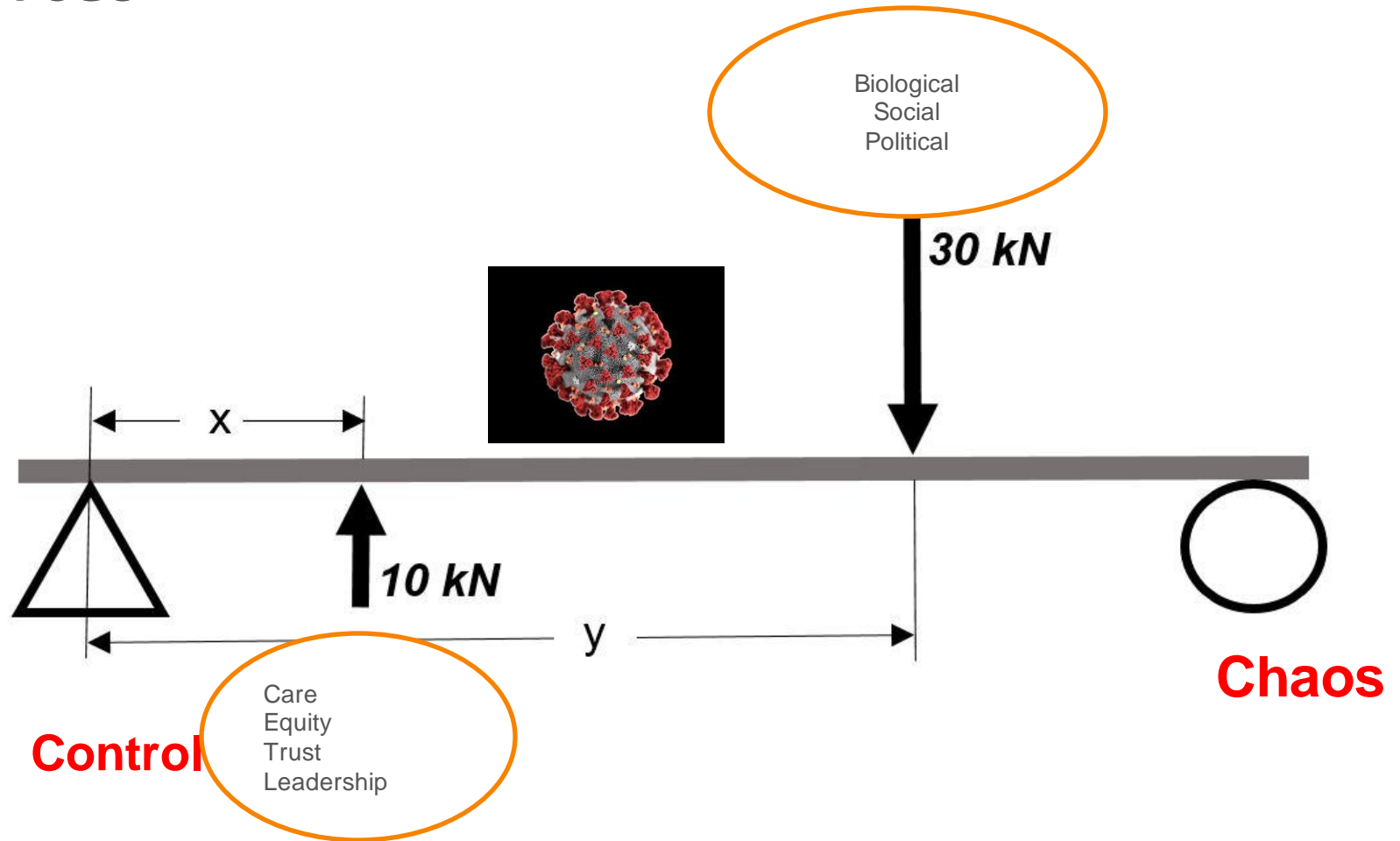
Our World
in Data



Source: European CDC – Situation Update Worldwide – Last updated 8 September, 12:34 (London time)

CC BY

Forces



The Dynamic Nature of Social Forces and Mitigation



- Care —a moral basis, compassion, solidarity, mutuality
- Equity—attention to the most vulnerable, social support
- Trust--accessibility, quality of services
- Leadership--logic, reason, accountability

Closing Announcements

Learning Collaborative Updates

CRC Miniseries Structure:

- A kickoff webinar will highlight the factors underlying health inequity and the key role of effective resource coordination in equitable responses.
- Three consecutive workshops will enable participants to identify and address a specific challenge related to resource coordination in their organization.

With the support of peers as well as PIH Catalysts and Technical Advisors, members will both generate solutions to their challenge and contribute to an articulation of best practices for this vital pillar of public health response to COVID-19.

Accepting Late Applications – consider joining us!

Who Should Apply?

- **Contact Tracing Programs:** Program Managers and other decision-makers in COVID-19 contact tracing programs with a resource coordination component (established or under development)
- **Community Organizations:** Program Managers and other decision-makers in community-based organizations that are partnering with contact tracing programs on resource coordination and provision efforts

Note: Implementers receiving Technical Assistance from PIH are welcome to apply—Learning Session engagement will be synergistic with TA work

Learning Collaborative CRC Miniseries

ACTIVITY	OCT 5-9	OCT 12-16	OCT 19-23	OCT 26-30	NOV 2-6	NOV 9-13	NOV 16-20	NOV 23-27	NOV30- DC4	DEC 7-11	DEC 14-18
Recruitment & Selection; prework.											
Kickoff Webinar			Oct.19								
Workshop 1; 1-on-1 catalyst call			Oct.23								
Action Period 1											
Workshop 2							Nov.18				
Action Period 2											
Workshop 3											Dec.16
Dissemination/White Paper											2021

Next steps

- Sign up for Learning Collaborative
- Apply for participation in Learning Series on CRC in hardest hit communities – information will be recirculated.
- Email learningcollab@pih.org with any questions or support requests from our Catalyst team
- Complete feedback poll – anonymous