



# Paul's Legacy AND PIH's Path Forward

*THE FIVE S's: BUILDING RESILIENT HEALTH SYSTEMS*



**SPEAKER**  
Dr. Sheila Davis



**SPEAKER**  
Dr. Patrick Ulysse



**SPEAKER**  
Dr. Paul Sonenthal



**SPEAKER**  
Dr. Melino Ndayizigiye



**MODERATOR**  
Leslie Friday



# The Five S's of PIH

## COMPLEX SYSTEMS TO SOLVE COMPLEX PROBLEMS

Because there is no single silver bullet to solve for global health equity, we must have the will and imagination to improve complex, integrated systems.

We look at system strengthening as a mix of five fundamental ingredients: staff, stuff, space, systems, and social support.





# BRING O<sub>2</sub>

Building Reliable Integrated and  
Next Generation O<sub>2</sub> Services

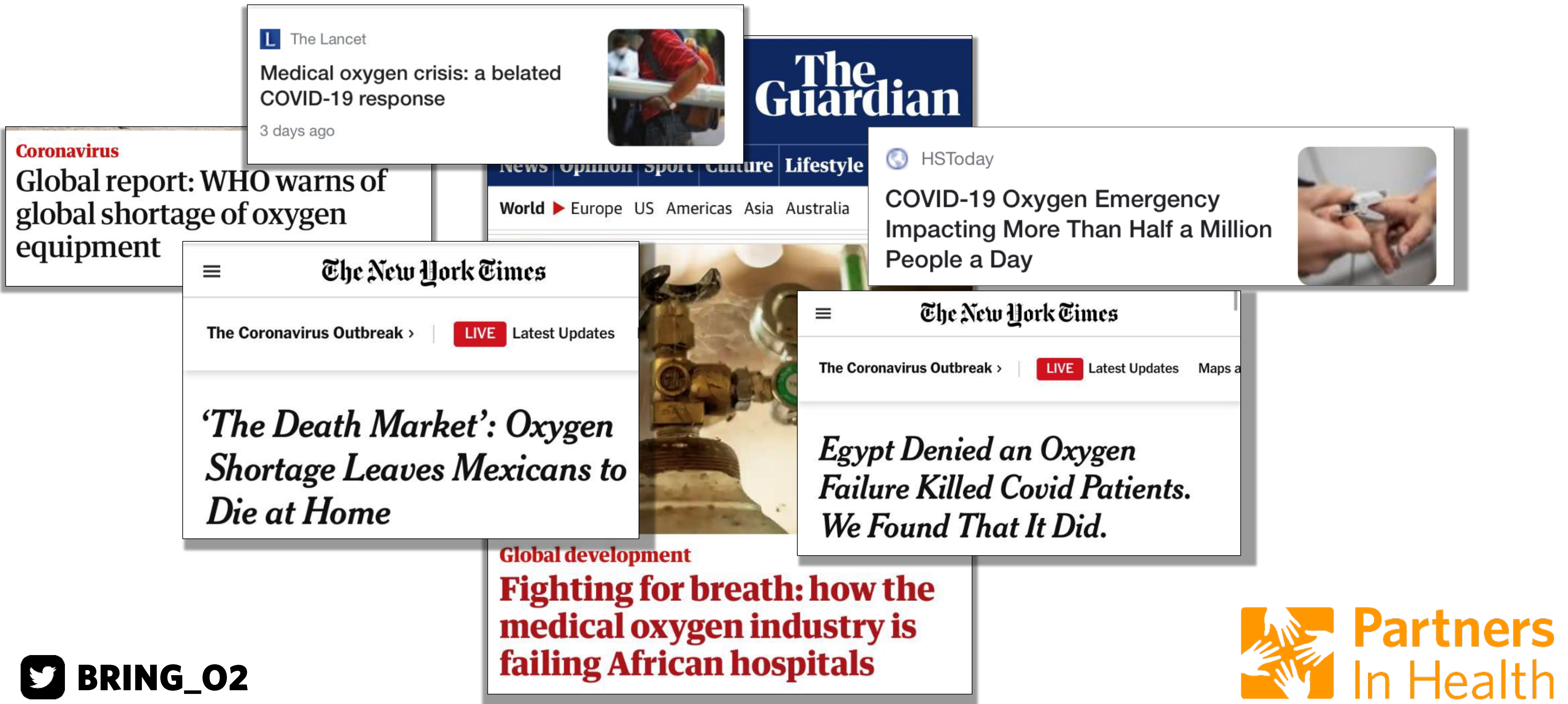
Photo By Paul Sonenthal/ PIH



Partners  
In Health



# THE WORLD IS FACING AN OXYGEN CRISIS



# WE ARE OXYGEN EXPERTS

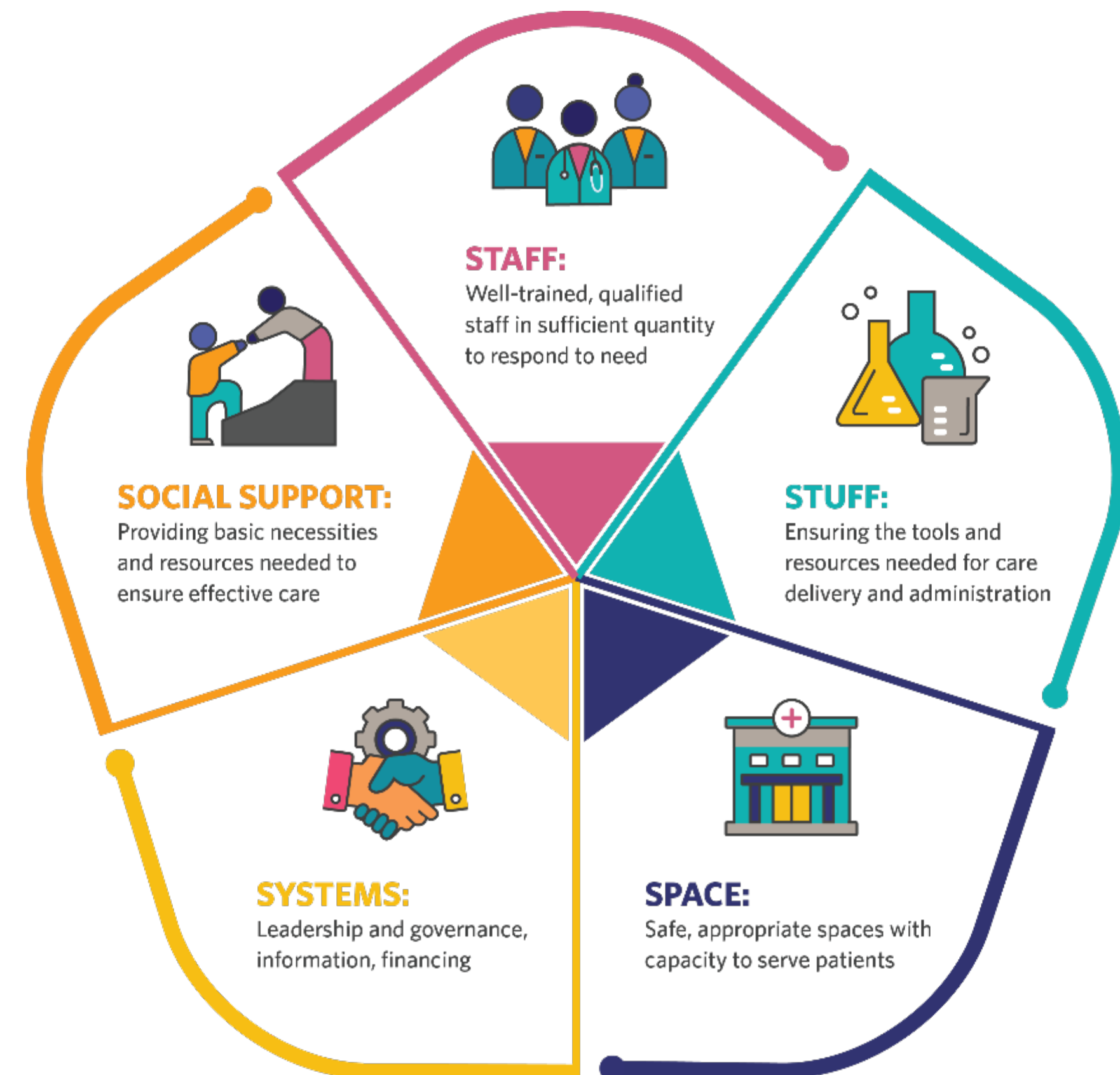
Using the five S's to help our patients breathe

We **install oxygen production plants** and piping systems, and **distribute oxygen cylinders** to ensure a sufficient oxygen supply

We **train and equip maintenance technicians** to guarantee a reliable oxygen supply

We **train healthcare workers** to recognize when patients need oxygen and to understand the nuances of oxygen delivery

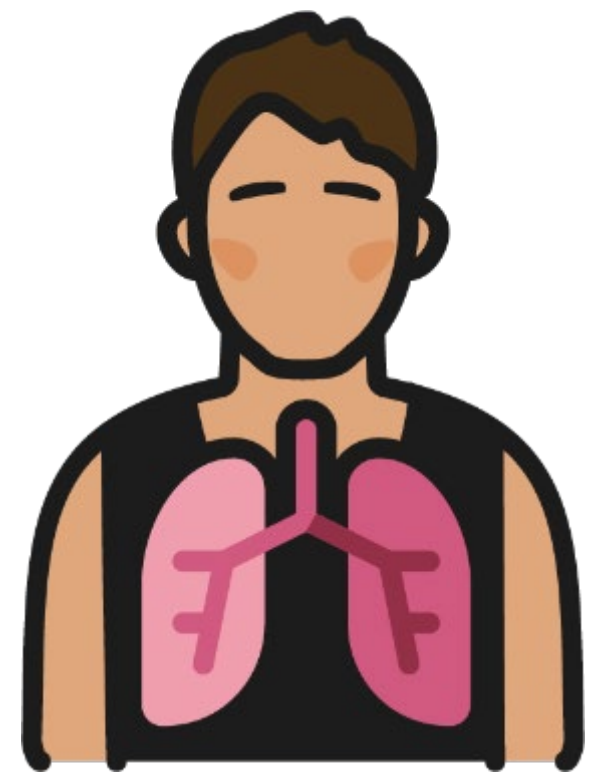
We support governments to **develop national oxygen strategies**





# BACKGROUND

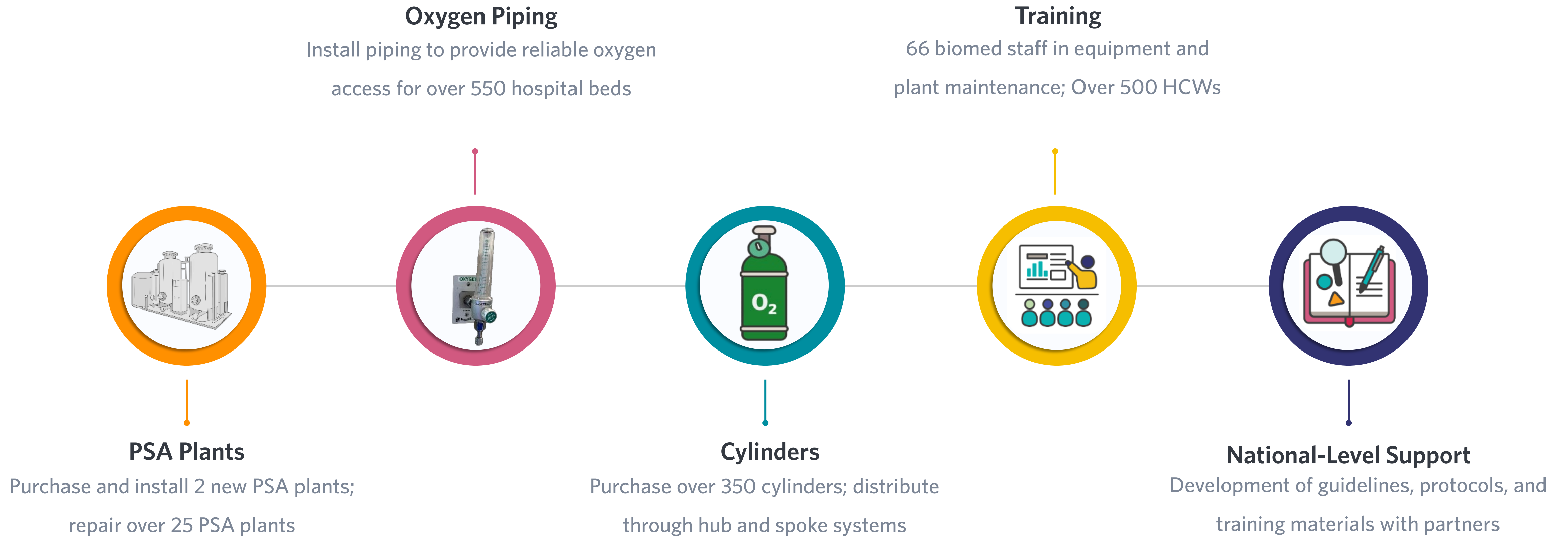
---



Funded by **Unitaid**, PIH has launched **BRING O2** in partnership with **Pivot** and **Build Health International**, to accelerate access to safe, reliable, and quality oxygen in Malawi, Rwanda, Peru, Lesotho, and Madagascar.

# BRING O2

## Core activities across the oxygen ecosystem



PSA plant illustration: OpenCriticalCare.org







Partners  
In Health

**Boston**  
coordination & support

**Peru**  
15+ PSA plants repaired  
15+ facilities supported  
1.7 million population supported

**Lesotho**  
4 PSA plants repaired  
1 facility with new oxygen piping  
18 facilities supported  
2.1 million population supported

**Malawi**  
1 new PSA plant installed  
2 PSA plants repaired  
6 facilities with new oxygen piping  
7 facilities supported  
1.9 million population supported

#### ADDITIONAL AREAS OF SUPPORT

- |   |                                 |
|---|---------------------------------|
| clinical training, guidelines, and ministry support | oxygen concentrators            |
| decentralized oxygen distribution                   | biomedical training and support |

**Rwanda**  
1 new PSA plant installed  
1 facilities with new oxygen piping  
3 facilities supported  
1 million population supported

**Madagascar**  
7 PSA plants assessed  
2 PSA plants repaired  
15 facilities supported  
27 million population supported



population supported: number of people with access to improved oxygen services



# PROGRESS TO DATE

New oxygen capacity for 11,000 patients per year

## Oxygen Generation

**2** oxygen plants repaired and over **25** additional repairs in planning stages

**2** new oxygen plants purchased

**89** oxygen concentrators repaired or installed

## Training

**44** biomedical staff trained on safe handling of oxygen and concentrator maintenance

**42** clinical staff trained in oxygen delivery

## National-Level Support

Participation in national oxygen committees

Supported development of national protocols and training courses





# Thank you



# Partners In Health



**BRING\_02**

Photo By Paul Sonenthal/ PIH