



# Partners In Health

ENGAGE

Building the **Right to Health** Movement



**Partners**  
**In Health**

ENGAGE

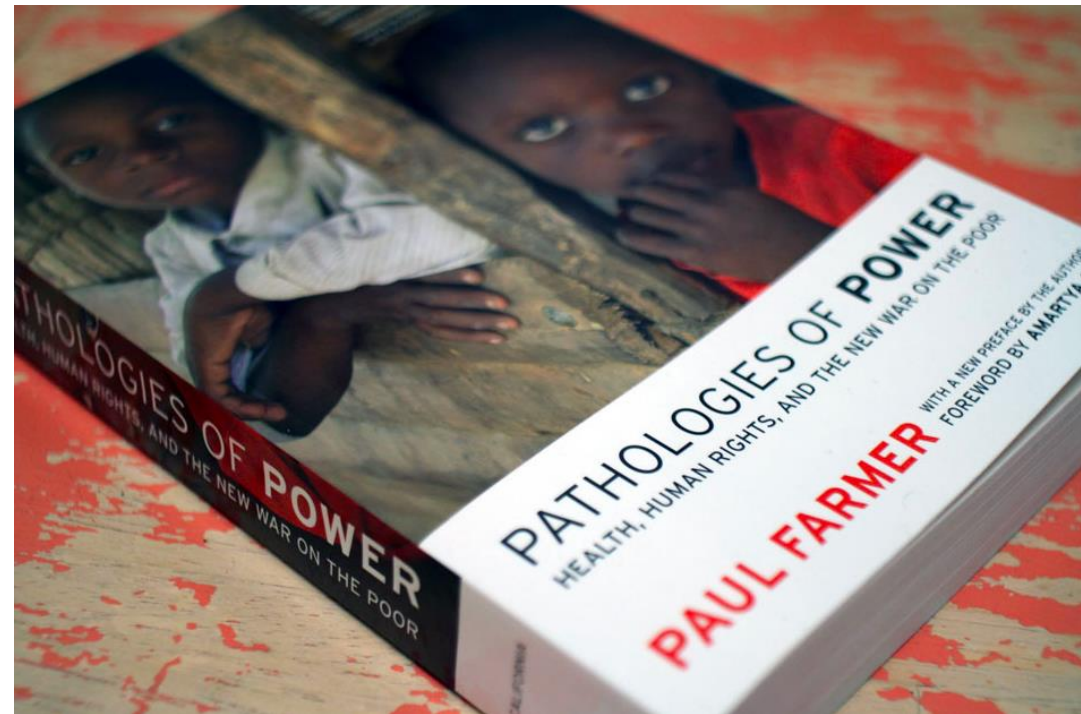
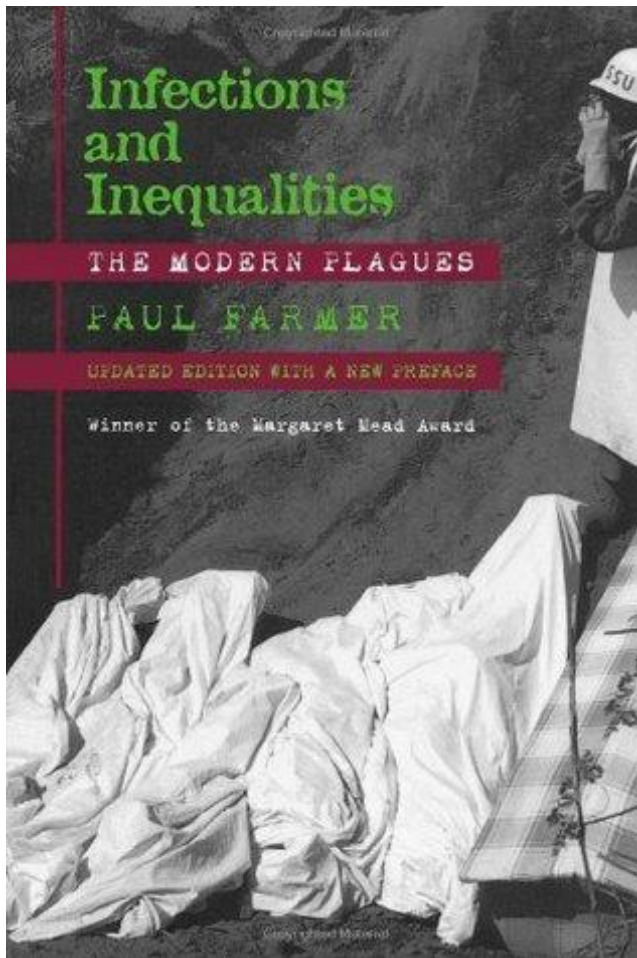
---

# PIH Engage History



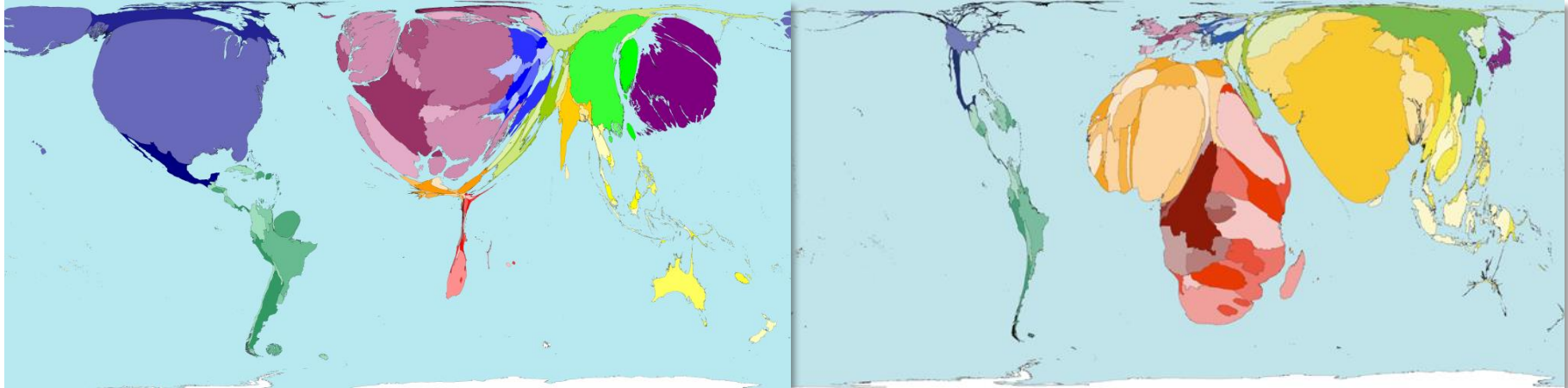
**Partners  
In Health**  
ENGAGE

**Fall 2012**





**Partners  
In Health**  
ENGAGE



**Worldwide public  
health  
expenditures**

**Deaths from  
preventable  
causes**

**Sources:**

"Public Health Spending," World Mapper, <http://www.worldmapper.org/display.php?selected=213>

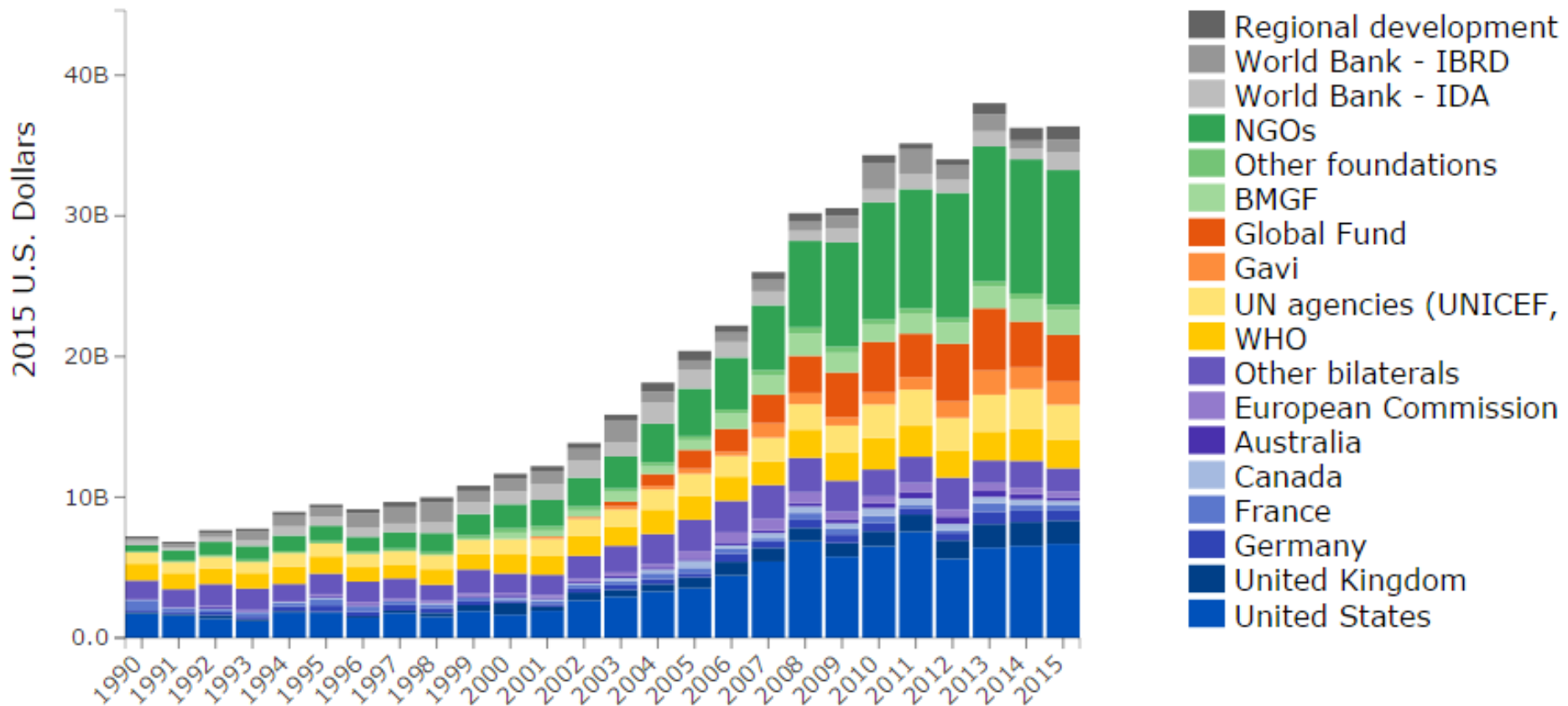
"Often Preventable Deaths," World Mapper, [http://www.worldmapper.org/display\\_extra.php?selected=371](http://www.worldmapper.org/display_extra.php?selected=371)



# Partners In Health

ENGAGE

Channels of Development Assistance for Health (DAH)

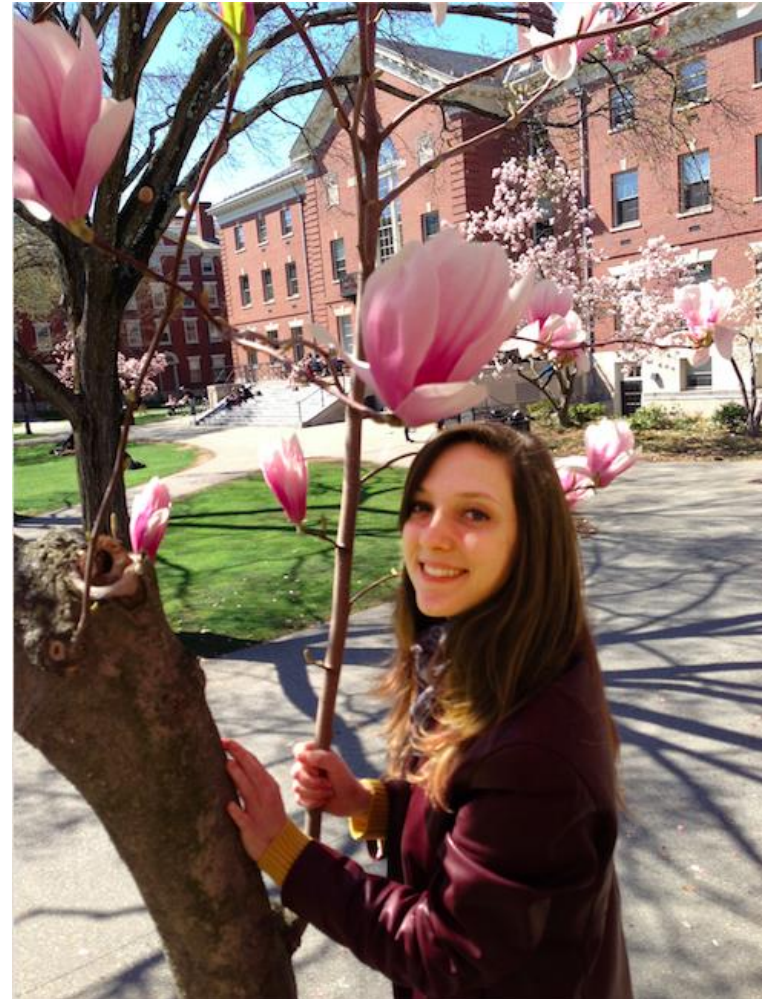




**Partners**  
**In Health**  
ENGAGE

---

**Why are you  
here?**





**Partners  
In Health**  
ENGAGE

# What's possible



Experts agree that by 2030 we can:

- end the AIDS epidemic
- End the TB epidemic
- Reduce the global maternal mortality ratio to <70 per 100,000 live births
- End preventable deaths of newborns and children <5

...and a whole lot more





**Partners  
In Health**

ENGAGE

---

**But we can't achieve those goals without  
a movement for the right to health**



**Partners  
In Health**  
ENGAGE

# What's possible

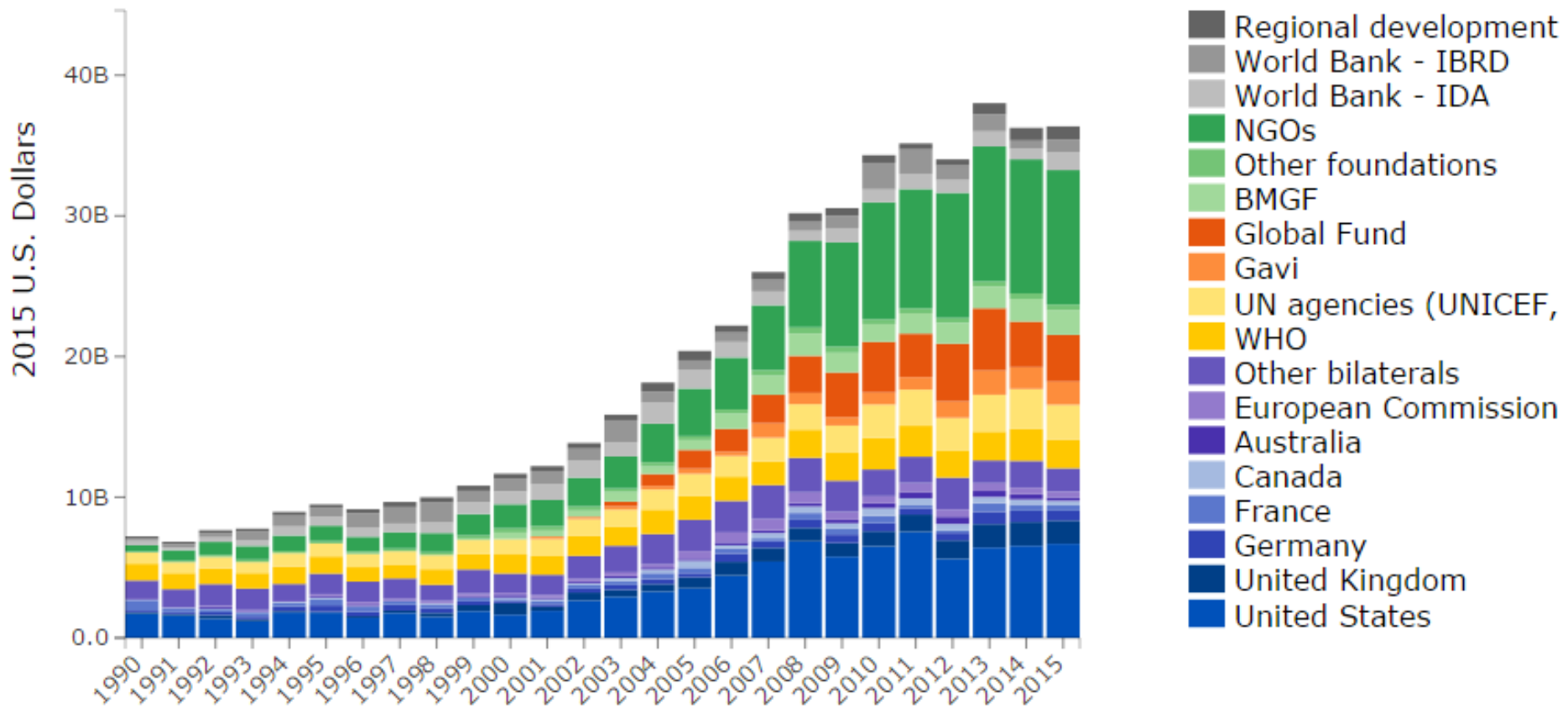




# Partners In Health

ENGAGE

Channels of Development Assistance for Health (DAH)



We need to bring the movement for global health equity back to the streets



Health is a fundamental human right – and we need to demand that it be recognized



**Partners**  
**In Health**  
ENGAGE

---

# **The PIH Engage Mission**



**Partners**  
**In Health**  
ENGAGE

## Our mission

---

**PIH Engage aims to build the right to health movement by growing and amplifying PIH's work to advance the right to health globally.**

Partners In Health builds health care delivery systems and serves the poor; PIH Engage brings resources and builds power to stabilize the financing of these systems globally. We recruit and train teams of volunteer organizers to raise funds and engage with policy makers, focusing all of our actions on the three pillars of PIH Engage: advocacy, fundraising, and education.



- We **organize** by building strong teams capable of hosting events, rallies, town hall meetings, and marches.
- We **educate** by holding discussion groups and public lectures about the right to health.
- We **generate** resources to fund high-quality health care for people living in poverty.
- We **advocate** for global and domestic policies that further the right to health.

**Together**, we will demand that the right to health be protected for all people, everywhere.



**Partners  
In Health**

ENGAGE

---

# **A brief history**

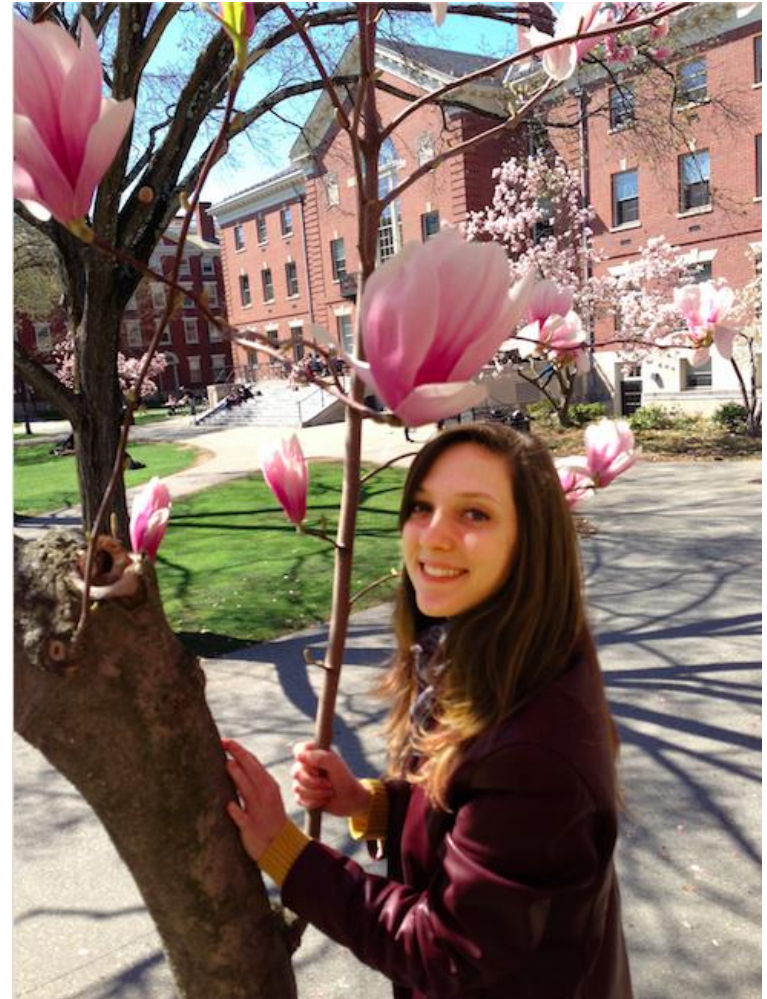




**Partners  
In Health**  
ENGAGE

---

**Why are you  
here?**





Partners  
In Health  
ENGAGE

# History of PIH Engage



Challenge:  
Teams feeling  
**overwhelmed** and  
**alone.**

Solution:  
**Coaching!**



Challenge:

**Fundraising is hard** and sometimes uncomfortable.

Solution: **Story of self**



And sometimes a little social media...



**Sheena Wood**  
December 3, 2013 · 2

From the PIH | Engage team: There's only a few hours left in Partners In Health's match campaign. Celebrate #GivingTuesday by donating to my page before midnight tonight and your contribution will be doubled!

Jon Shaffer

<https://donate.pih.org/p/PIHengage2013/sheena>

**Jon Shaffer** The next person to give \$50 to Sheena's page, I'll match with my own \$50 and then the PIH board member will match both of those. That's \$200 for good health care for people who wouldn't otherwise get it. Who's in?

4y · Like 5

**Laura Seeley Van Dyke** Me!

4y · Like

**Sheena Wood** Wow! Thanks to Laura for her generous donation 😊

4y · Like

**Sheena Wood** Feeling fortunate to be surrounded by so many generous people -- an additional thank you to **Brittni**, **Cindy**, **Jonathan**, **Eliza**, and **Katherine**!

4y · Like

**Sheena Wood** And, thanks **Jon Shaffer** for your match! What an incredible Giving Tuesday.

4y · Like

Challenge:  
Advocacy is  
**complicated** and  
sometimes  
**intimidating.**

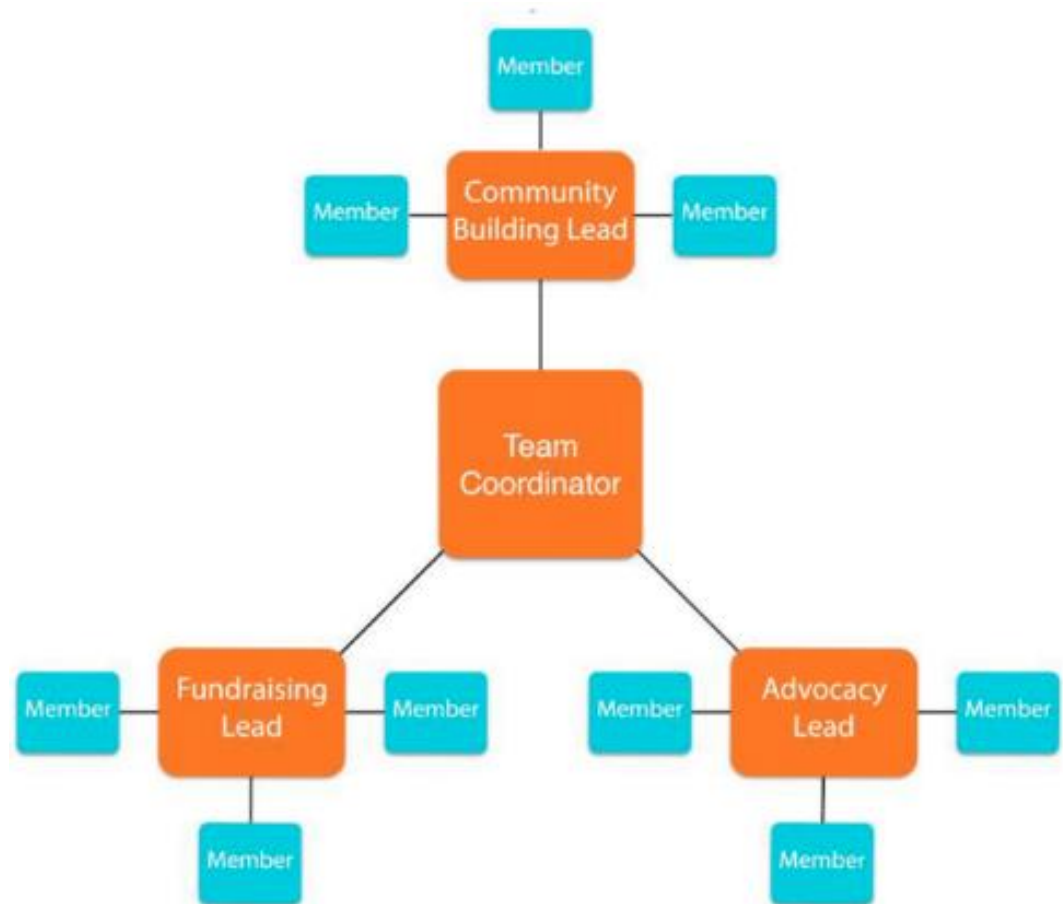
Solution: **Learn,**  
**partner,** use your  
**voice**



## Challenge:

Teams aren't static and **people have lives.**

Solution: Be intentional about **transitions**, and have a **back up plan.**





**Partners**  
**In Health**  
ENGAGE

# History of PIH Engage

**Challenge:**

How do we draw more on the experiences of our **amazing members?**

**Solution: Steering Committee!**







## 2012:

- 20 teams
- No team support
- Bake sales
- A few letters to Congress
- No transition plan
- Teams were siloed

## 2018:

- 60 Teams
- Coaching
- Personal fundraising and events
- Meetings with Congress
- Steering Committee



Partners  
In Health  
ENGAGE

# History of PIH Engage

From here...



...to here





Partners  
In Health

ENGAGE

---

**PIH Engage aims to build the right to health movement by growing and amplifying PIH's work to advance the right to health globally.**

- We **organize** by building strong teams capable of hosting events, rallies, town hall meetings, and marches.
- We **educate** by holding discussion groups and public lectures about the right to health.
- We **generate** resources to fund high-quality health care for people living in poverty.
- We **advocate** for global and domestic policies that further the right to health.