



Partners
In Health

ENGAGE

Building the **Right to Health** Movement



**Partners
In Health**

ENGAGE

PIH Engage Mission and Vision

- ❖ PIH Engage Vision & Mission
- ❖ PIH Engage Pillars
- ❖ Year In Review
- ❖ Leadership Structure & Coaching
- ❖ The Current Crisis in Global Health
- ❖ The Current Opportunity
- ❖ Building a Social Movement



Partners
In Health
ENGAGE

Our Vision

PIH Engage aims to build the right to health movement by growing and amplifying PIH's work to advance the right to health globally.

We **recruit and empower teams** of dedicated volunteer community organizers. These teams **drive campaigns** focused on building and directing power towards generating new resources, fostering public discourse, and advocating for effective policies.

We organize by **building strong teams** and by fostering alliances with like-minded groups to ensure that the right to health is highlighted in the democratic process. Together, **we demand the right to health be protected for all people, everywhere.**

- We **organize** by building strong teams capable of hosting events, rallies, town hall meetings, and marches.
- We **educate** by holding discussion groups and public lectures about the right to health.
- We **generate** resources to fund high-quality health care for people living in poverty.
- We **advocate** for global and domestic policies that further the right to health.

Together, we will demand that the right to health be protected for all people, everywhere.



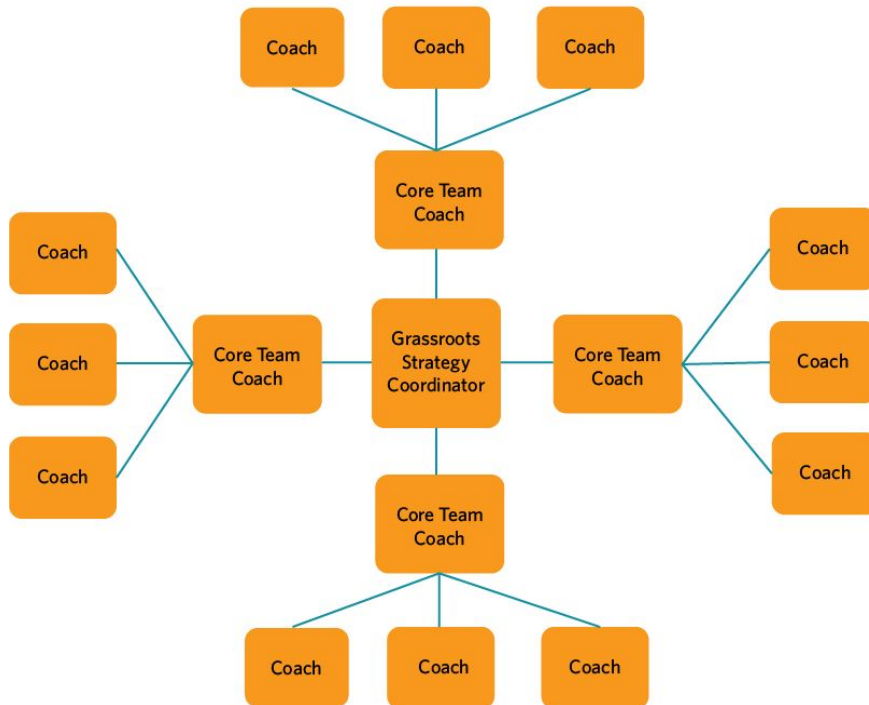
- 56 teams, 600+ members
- **Advocacy**
 - 76 LTEs submitted
 - 120 meetings with Congress
 - 500+ calls/emails to Congress
- **Community building**
 - 52 Bending the Arc Screenings
 - 140 Crash Course submissions
- **Fundraising**
 - \$73,582 raised through 753 donors
 - \$15,000 matching funds unlocked

[Year In Review](#), [Team highlights](#)



Our Leadership Team

Network Leadership Team Snowflake:



Similar to the team snowflake model, our leadership team is composed of 18 coaches divided into 4 small groups. Small group leaders form the core team along with our Grassroots Strategy Coordinator.



Partners
In Health
ENGAGE

Why do we coach?

Leadership in organizing is about enabling others to achieve purpose in the face of uncertainty. **Coaching enables others.** PIH Engage uses coaching as a way to enable our teams and leaders to overcome challenges and achieve their goals, thus strengthening our network.

Relationships are the foundation of an organized movement:

*Building **leaders** through **relationships***

*Building **communities** through **relationships***

*Building **power** through **relationships***



**Partners
In Health**

ENGAGE

The current crisis

Health focus areas of development assistance for health (DAH)



Global total for 2019: \$41 bil

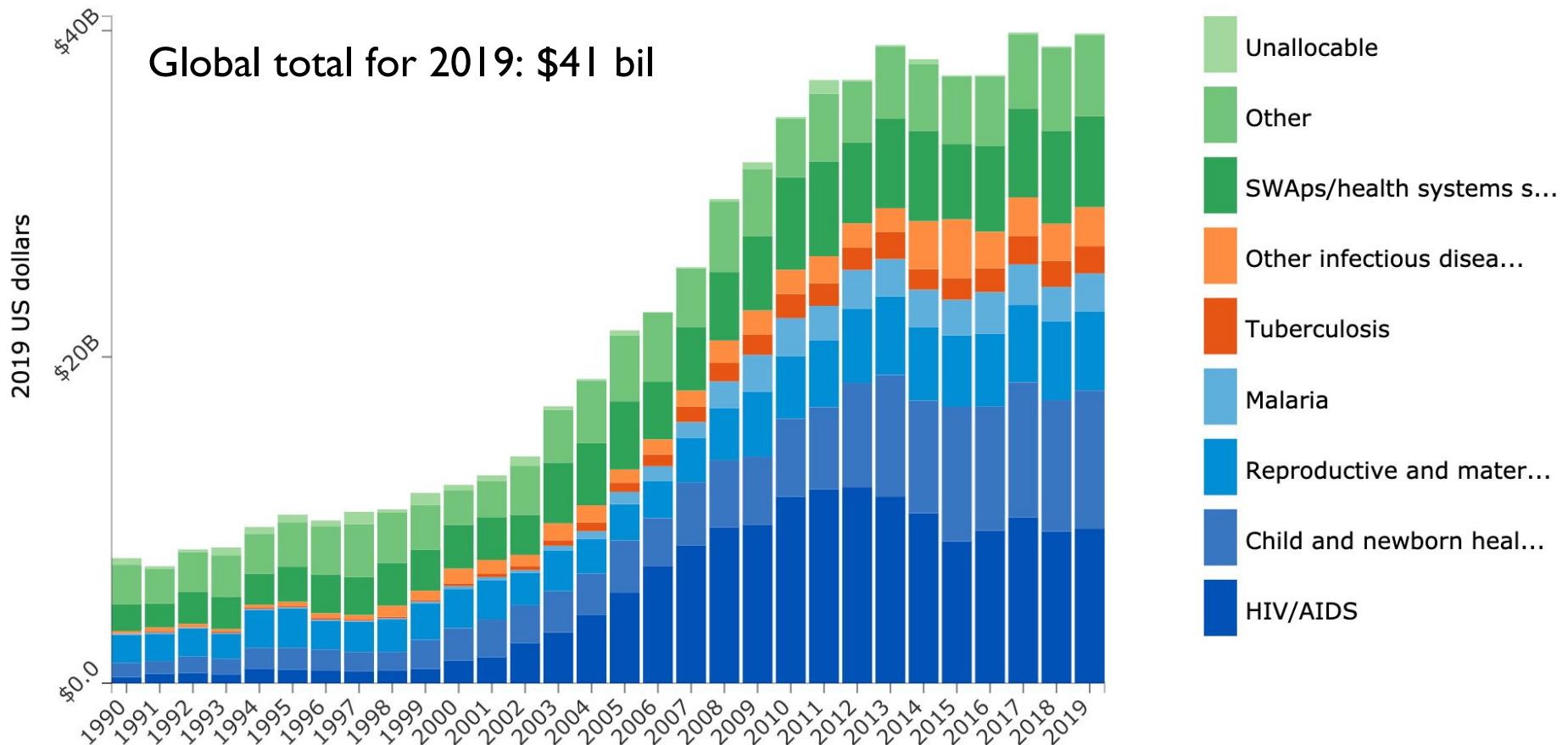
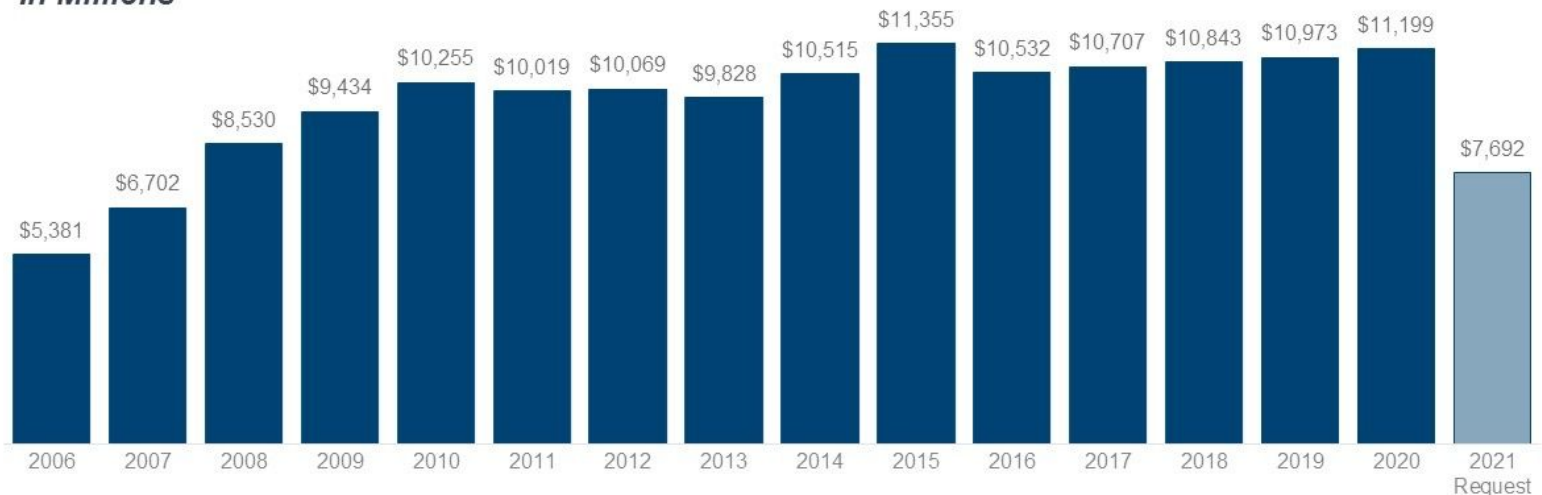


Figure 1

U.S. Global Health Funding, FY 2006 - FY 2021 Request

US total toward COVID: \$3.2 bil

In Millions



NOTES: Represents total known funding provided through the State Department, USAID, CDC, NIH, and DoD. FY13 includes the effects of sequestration. FY19, FY20, and FY21 Request are preliminary estimates. Some global health funding that is not specified in the appropriations bills and is determined at the agency level is not yet known for FY20 and FY21 Request and is assumed to remain at prior year levels.

SOURCE: Kaiser Family Foundation analysis of data from the "Consolidated Appropriations Act, 2020" (P.L. 116-94) and accompanying explanatory reports, the Office of Management and Budget, and U.S. Foreign Assistance Dashboard.

Right now, we can:

- Slow the COVID-19 pandemic, preventing deaths
- Curb the disproportionate impacts of the virus on communities of color

Experts agree that by 2030 we can:

- End the AIDS epidemic
- End the TB epidemic
- End preventable deaths of newborns and children under 5



Partners
In Health
ENGAGE

The current opportunity

We have a chance to change the course of this history.

- In the past two weeks alone, we've had 70+ meetings with MoC surrounding COVID response both domestically and globally!
- Our network is 73 teams strong, with 12 new teams starting up this year across the U.S.

There is power in people.



Partners
In Health
ENGAGE

The current opportunity

There is **power** in a **social movement**.





**Partners
In Health**

ENGAGE

“There will be no equity without solidarity. There will be no justice without a social movement.”

-Joa Mukherjee, Chief Medical Officer, PIH